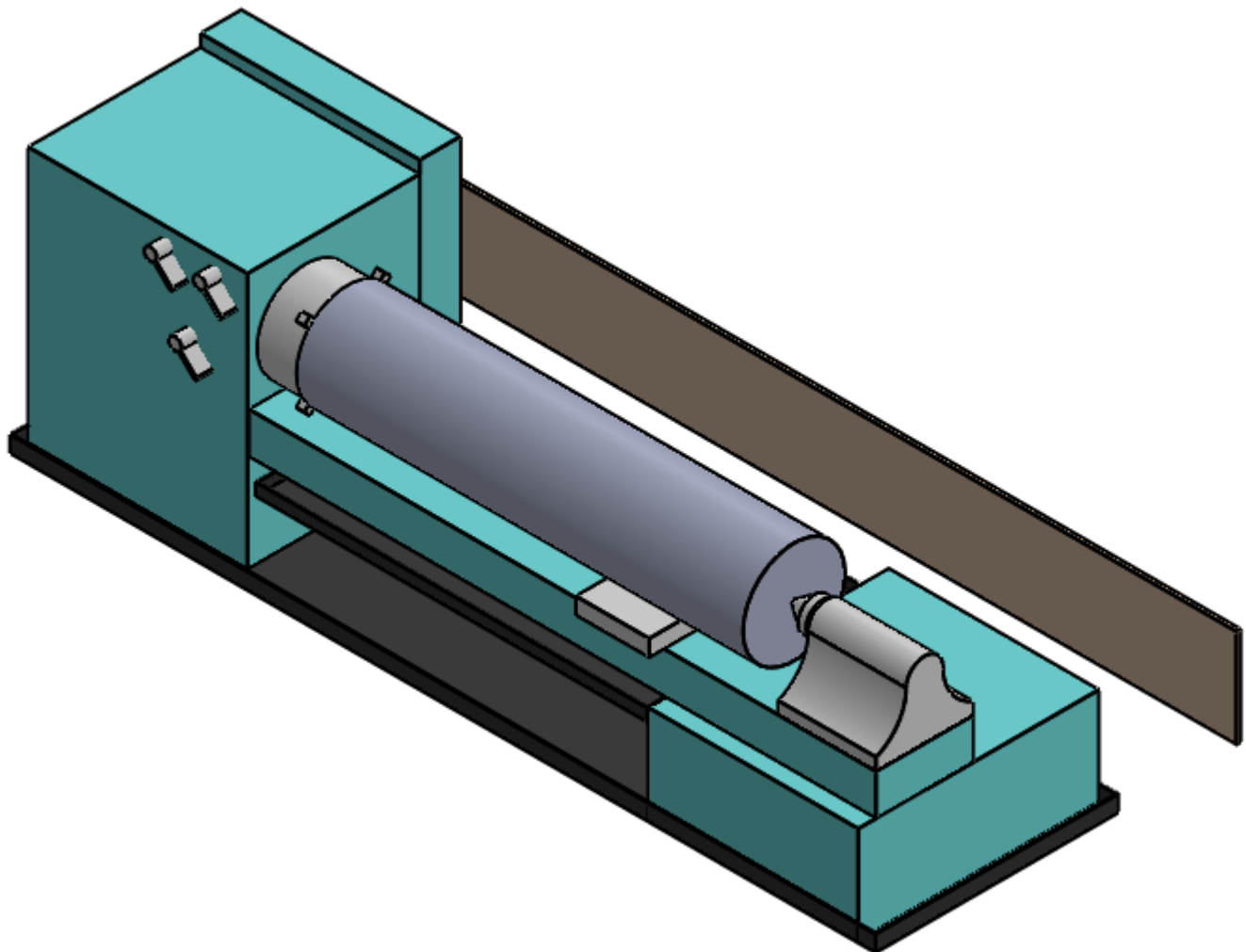


Uni-Rail Lathe Shield

Field Measurement Tool

Thank you for your interest in our Uni-Rail Lathe Guard System. Each Uni-Rail is custom designed and fabricated for your specific machine. This measurement tool is used to collect information to support the custom quote, design, and engineering phases.

Customer Name:		Date:	
Preferred Contact Phone & Email:			
Machine Location:			
Machine Sub-Location:			
Machine Make:			
Machine Model:			
Machine Serial Number:			
Machine (Asset) Number:			



Uni-Rail Lathe Shield

Field Measurement Tool

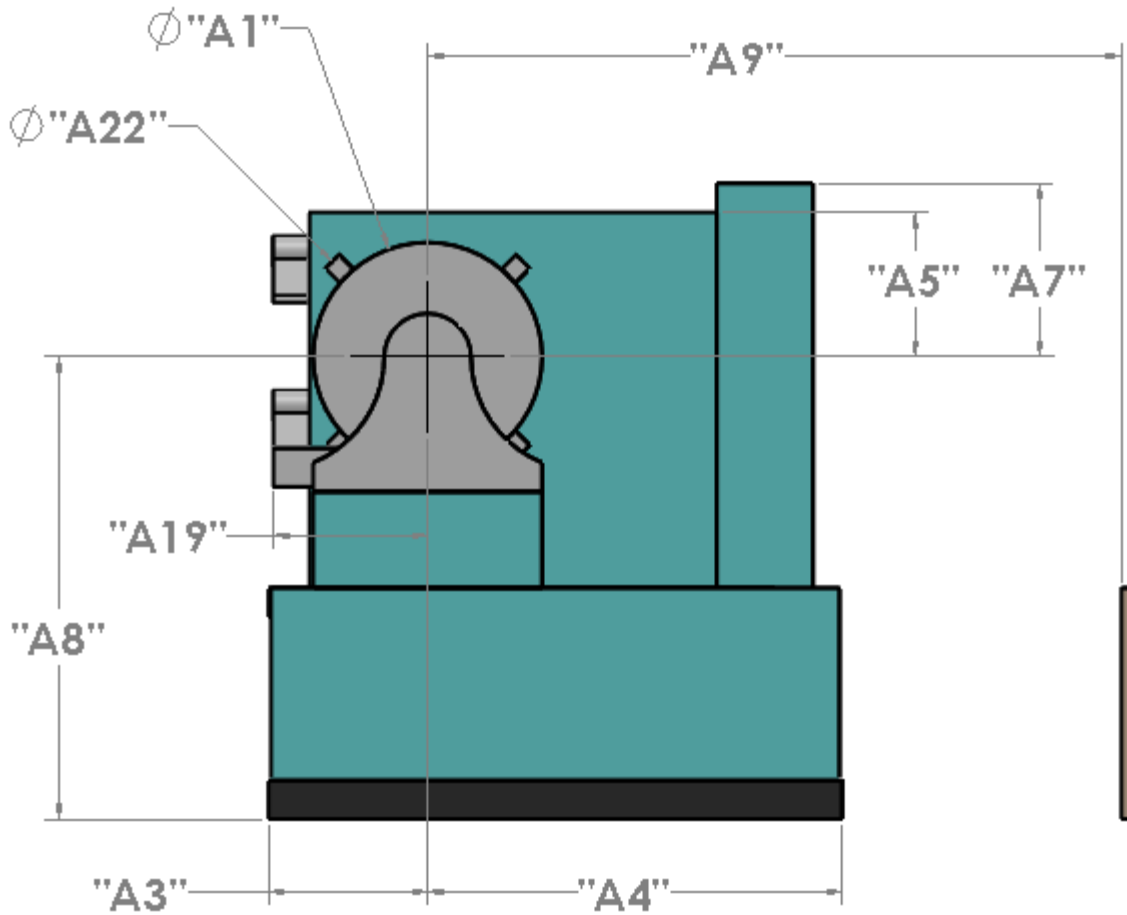


Lathe Measurement Description		Length (IN)	Notes
Chuck Diameter	Φ"A1":		
Floor to Highest Adjusting Handle on Cross Slide	"A2":		
Chuck Centerline to Front of Base	"A3":		
Chuck Centerline to Rear of Base	"A4":		
If Applicable, Chuck Centerline to Minor Height	"A5":		
Floor to Top of Drip Pan	"A6":		
Chuck Centerline to Overall Height	"A7":		
Floor to Chuck Centerline	"A8":		
Chuck Centerline to Closest Obstruction	"A9":		
If Applicable, Chuck Centerline to Minor Depth	"A10":		
Chuck Centerline to Rear of Lathe	"A11":		
Drip Pan Depth	"A12":		
Chuck Face to Right Side End of Drip Pan	"A13":		
Chuck Centerline to Outside of Controls	"A14":		
Chuck Depth	"A15":		
Chuck Face to End of Rail/Track	"A16":		
Chuck Face to Left Side End of Lathe	"A17":		
Chuck Face to Right Side End of Lathe	"A18":		
Chuck Centerline to Front Tool Post	"A19":		
Chuck Face to Left Side End of Drip Pan	"A20":		
Traveler Tool Width	"A21":		
Max Chuck Jaw Diameter	Φ"A22":		
Chuck Centerline to Rail/Track Height	"A23":		
Chuck Centerline to Rear of Drip Pan	"A24":		
Diameter of Largest Stock Material Used	Φ"A25":		
Backsplash Required?	(Yes/No):		
Chuck Interlock Required (Recommended)?	(Yes/No):		
<u>Is coolant used during lathe operation?</u>			
<u>How is the lathe loaded?</u>			
<u>Note any other Obstructions (Levers, E-Stops, Control Panels, etc.)</u>			

Uni-Rail Lathe Shield

Field Measurement Tool

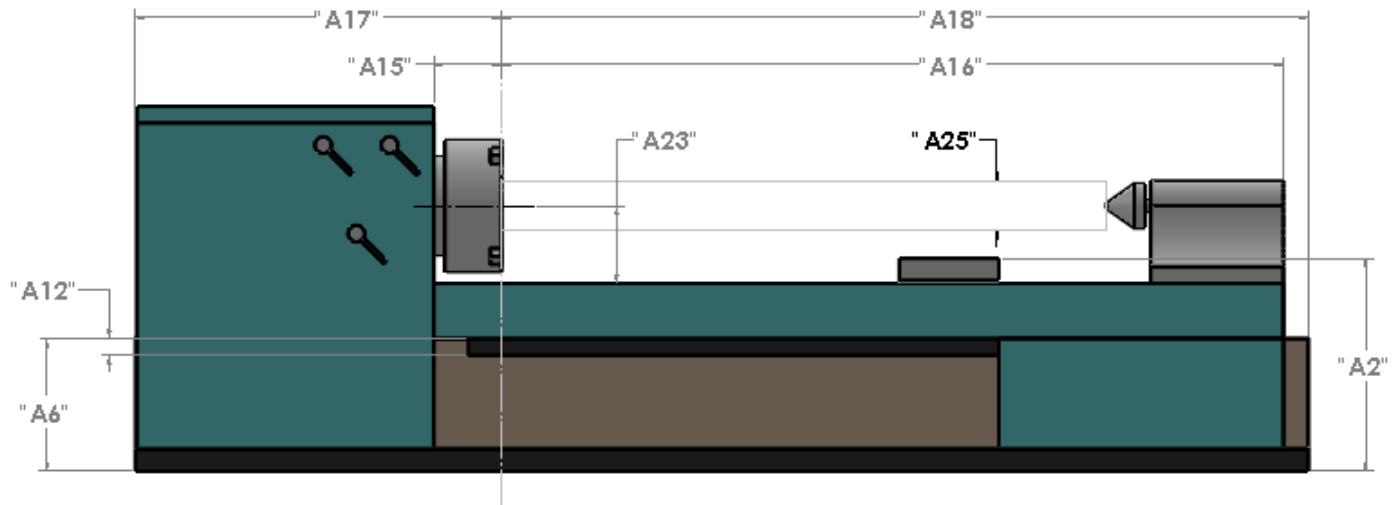
Right Hand View



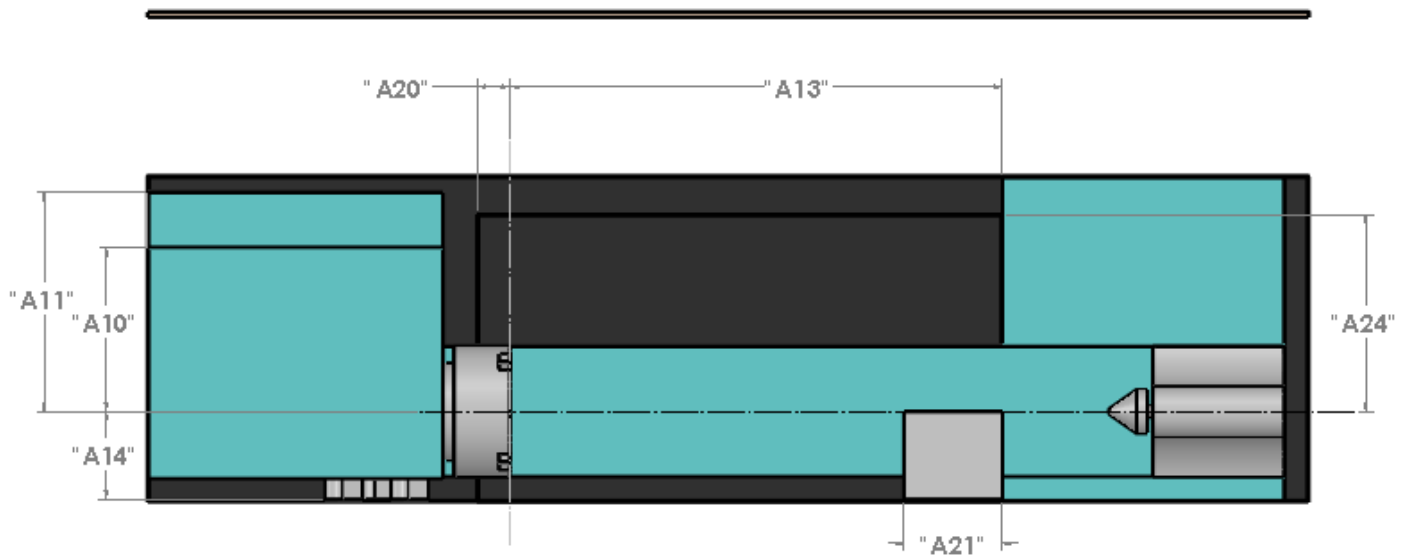
Uni-Rail Lathe Shield

Field Measurement Tool

Front View



Top View



Measurement Instructions

- Fill out information in the measurement table (page 1) as completely as possible.
- All dimensions to be rounded to the nearest ¼".
- Take photos of the machine:
 - From all sides – front, rear, left, and right.
 - Of any obstructions, clearance issues, etc.
- Submit the completed form and pictures to onlinestore@strongholdsafety.com.

Questions? Call or email us for assistance! 651-300-2819 | onlinestore@strongholdsafety.com